

Heating Stoves 1730-1930

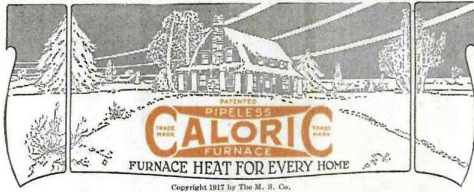
American Stoves & Furnaces-1

THIS WRITTEN GUARANTEE IS ISSUED TO EVERY PURCHASER OF A CALORIC PIPELESS-FURNACE. IT IS SIGNED BY THE LOCAL DEALER WHO ADDS HIS PERSONAL GUARANTEE TO THE BACKING WHICH IS GIVEN BY OUR NINETY-NINE YEARS OF EXPERIENCE IN THE MANUFACTURE OF HEATING APPLIANCES AND BY THE REPUTATION WE HAVE BUILT UP THROUGH ALMOST A CENTURY OF SQUARE DEALING.

Monitor Ironclad Guarantee No. 152483
ISSUED BY
THE MONITOR STOVE COMPANY
"ESTABLISHED 1819" CINCINNATI, OHIO "99 YEARS OF SERVICE"

SYSTEM AND SERVICE
COMFORT AND CONVENIENCE

HEALTH AND HAPPINESS
ECONOMY AND EFFICIENCY



Copyright 1917 by The M. S. Co.
THE ORIGINAL PATENTED PIPELESS FURNACE

Whereas _____ at _____
City of _____ State of _____ has purchased from _____
Name of Caloric Dealer Quantity and No. of Furnace
_____ patented Caloric Pipeless Furnace
for the sum of \$ _____

The Monitor Stove Company, the manufacturer of the patented Caloric Pipeless Furnace, guarantees the material in the same to be free from defect, and further guarantees the Monitor double-piped firepot against cracking and breaking for a period of five years. The Manufacturer further guarantees that said furnace has the capacity when properly installed, managed and operated to heat the building of the purchaser to an average of 70° Fahrenheit in the coldest weather. The purchaser of this furnace agrees to furnish proper fuel, a suitable chimney and to comply with the printed directions concerning the operation of the furnace. It is mutually agreed that upon any complaint within one year from the date of purchase, the manufacturer will be allowed to make a complete examination of the furnace and will be given the opportunity to remedy any defect in the furnace without charge to the customer.

THE MONITOR STOVE COMPANY
W. H. Schindler
Chairman of the Board.

Caloric Dealer _____
Date _____



FORM 11-1-COPYRIGHT 1918 BY THE MONITOR STOVE COMPANY

FEB 17 1915

NOVELTY STOVES AND RANGES



CATALOGUE 65 B

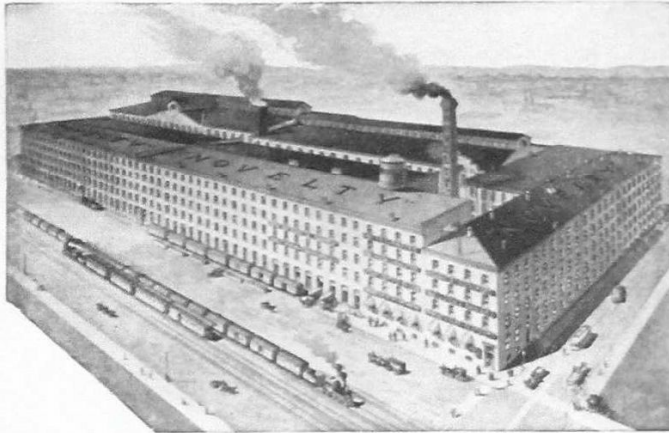
ABRAM COX STOVE CO.
PHILADELPHIA CHICAGO

CATALOGUE

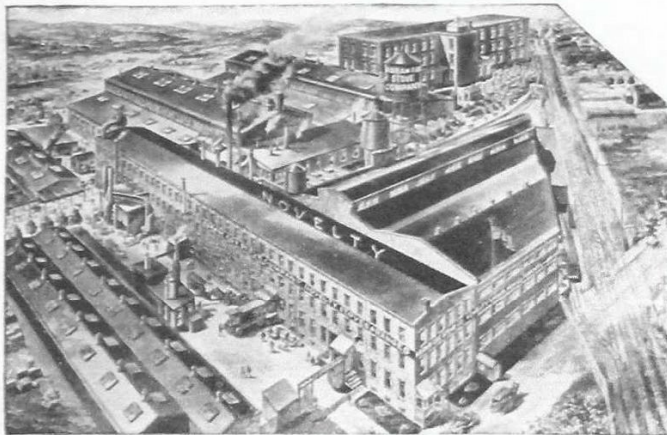
1847 65-B 1914

We take pleasure in submitting this Catalogue, showing what we regard as the best built and most up-to-date line of Coal Ranges, Combination Coal and Gas Ranges and Coal Heating Stoves ever placed on the market.

We publish an individual Circular for each Range or Stove shown in this Catalogue. These Circulars give a more complete description of the articles than is possible in a book of this kind and are a great aid to the dealer. We will gladly furnish any quantity desired



PHILADELPHIA FOUNDRY



LANSDALE, PA. FOUNDRY

VERY SPECIAL

For the particular use of Builders, Architects and Dealers using Hotel Ranges, Cabinet Ranges, Furnaces, Steam and Hot Water Boilers, Tank Heaters, etc., we publish a special Catalogue, No. 65 A which we will gladly send upon request.

ABRAM COX STOVE CO.

PHILADELPHIA :: CHICAGO

MAIN OFFICES: American and Dauphin Sts., Phila.

WESTERN OFFICE: 321 S. Jefferson Street, Chicago

FOUNDRIES: Philadelphia and Lansdale, Pa.

REGAL NOVELTY



The Regal Novelty is the most popular and best selling high-class Parlor Heater on the market. Has all the Novelty improvements in construction.

Equipped with Duplex Grates and Ransom Shaking Ring.

No.	Style	Firepot	Flue Collar	Height to base of Urn	Price
23	Revert. Flue	13 in.	6 in.	50 in.	\$62.00
24	Revert. Flue	14 in.	6 in.	52 in.	69.00
25	Revert. Flue	15 in.	6 in.	55 in.	77.00
27	Revert. Flue	17 in.	6 in.	58 in.	88.00

See description of Novelty Draft Check on page No. 63.

NOVELTY AIR-TIGHT

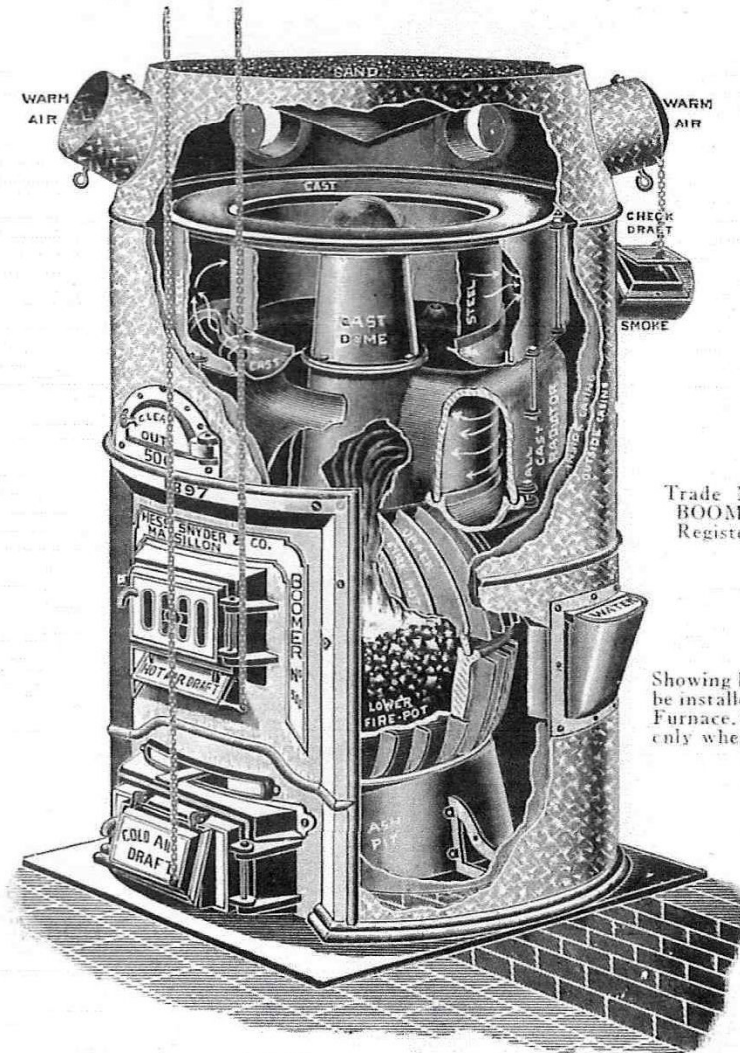


For use either as a Single or Double Heater.
Full radiation of the heat from all sides of the Firepot, with greatly
increased radiation from the large Dome.
Unanimous verdict: "The best Air-Tight ever built."

ECONOMY and SAFETY first—see Novelty Draft Check.

Boomer Furnace

Double return flue, heavy cast iron radiator
For Hard Coal, Soft Coal, Coke or Wood



Trade Mark
BOOMER
Registered

Showing how water box can be installed in any Boomer Furnace. Water box shipped only when ordered special.

DETAILED INFORMATION

Nos.	Weight	Diameter Fire Pot	Diameter Casing	Height Cased	Height Not Cased	Estimated Heating Capacity by Circulation Cubic Feet	Feed Opening
600	3,350 lbs.	32½ in.	60 in.	81 in.	64½ in.	45,000 to 65,000	8¼x15 in.

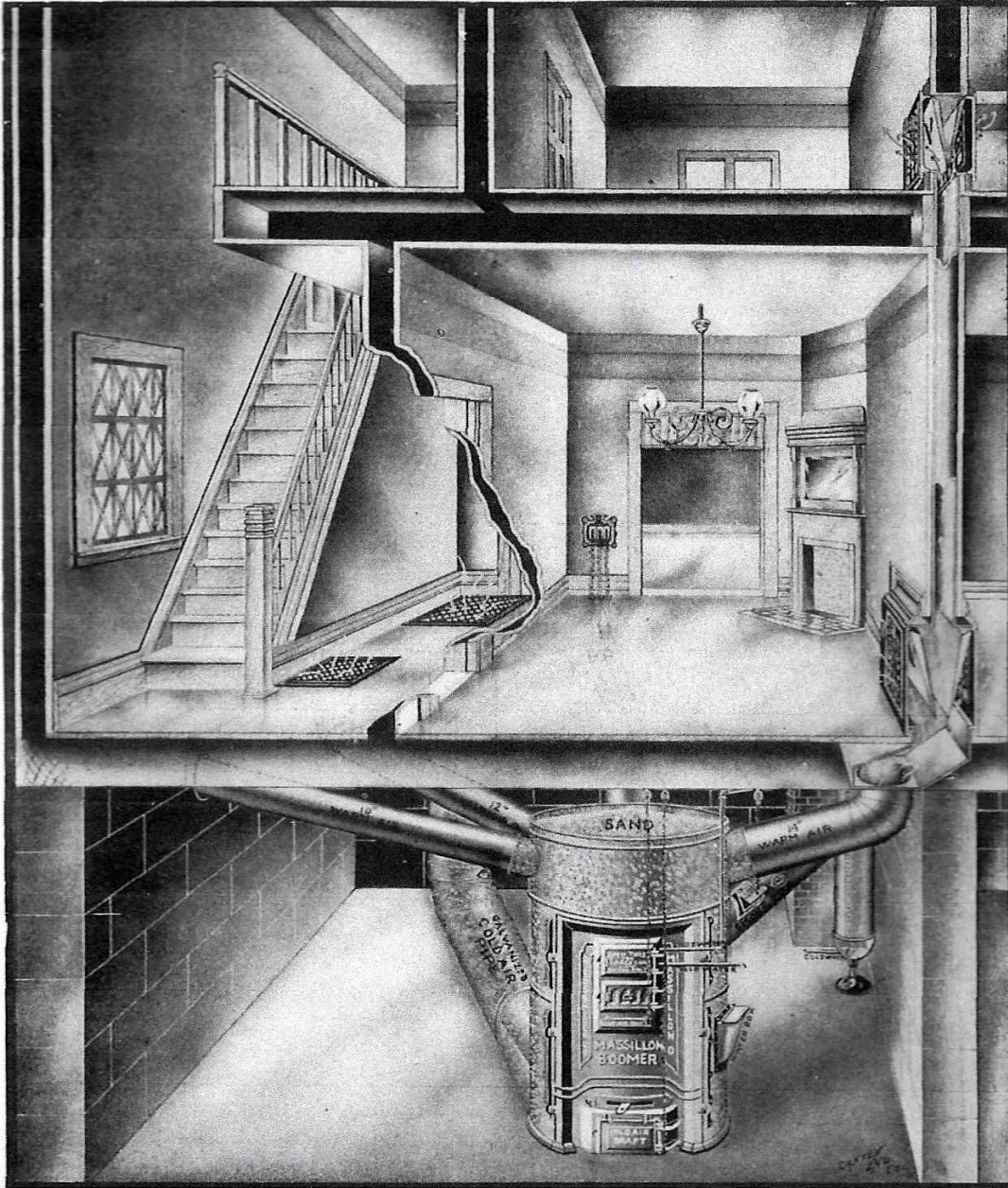
Actual capacities cannot be accurately given, owing to the varied conditions under which a furnace may be installed.

For description of Boomer Grates, see page 12; Casings, page 38; Hot Water Attachments, page 36. Rules for laying out Heating System, page 4.

This furnace may also be used as a floor heater, price same as regular furnace.

We have discontinued making Nos. 1381, 1442 and 1503 sizes, but can furnish any repairs if needed.

Our Method of Piping to Special Side Wall and Floor Registers, and the Boomer Regulator Connected to Check and Draft Doors



Always connect side wall pipe to cellar pipe with a shoe and a four-piece elbow, as shown in the cut. Every warm air pipe should have a damper close to the furnace.

Warm air pipes and smoke pipes should pitch upward, after leaving furnace, as much as possible.

The best furnace pipe tin is not any too good.

Double seam furnace pipes; never use solder.

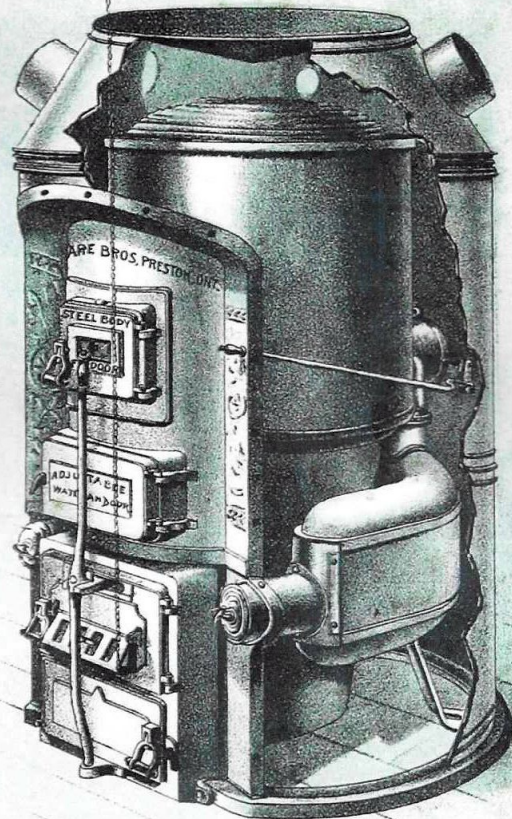
We manufacture special side wall registers and cold air faces. In fact, everything to complete a system of warm air heating.

We have made it a study for years and never lose sight of quality for the sake of price.

You can trust us to plan or install a Boomer furnace anywhere, and have the assurance that it will work to perfection.

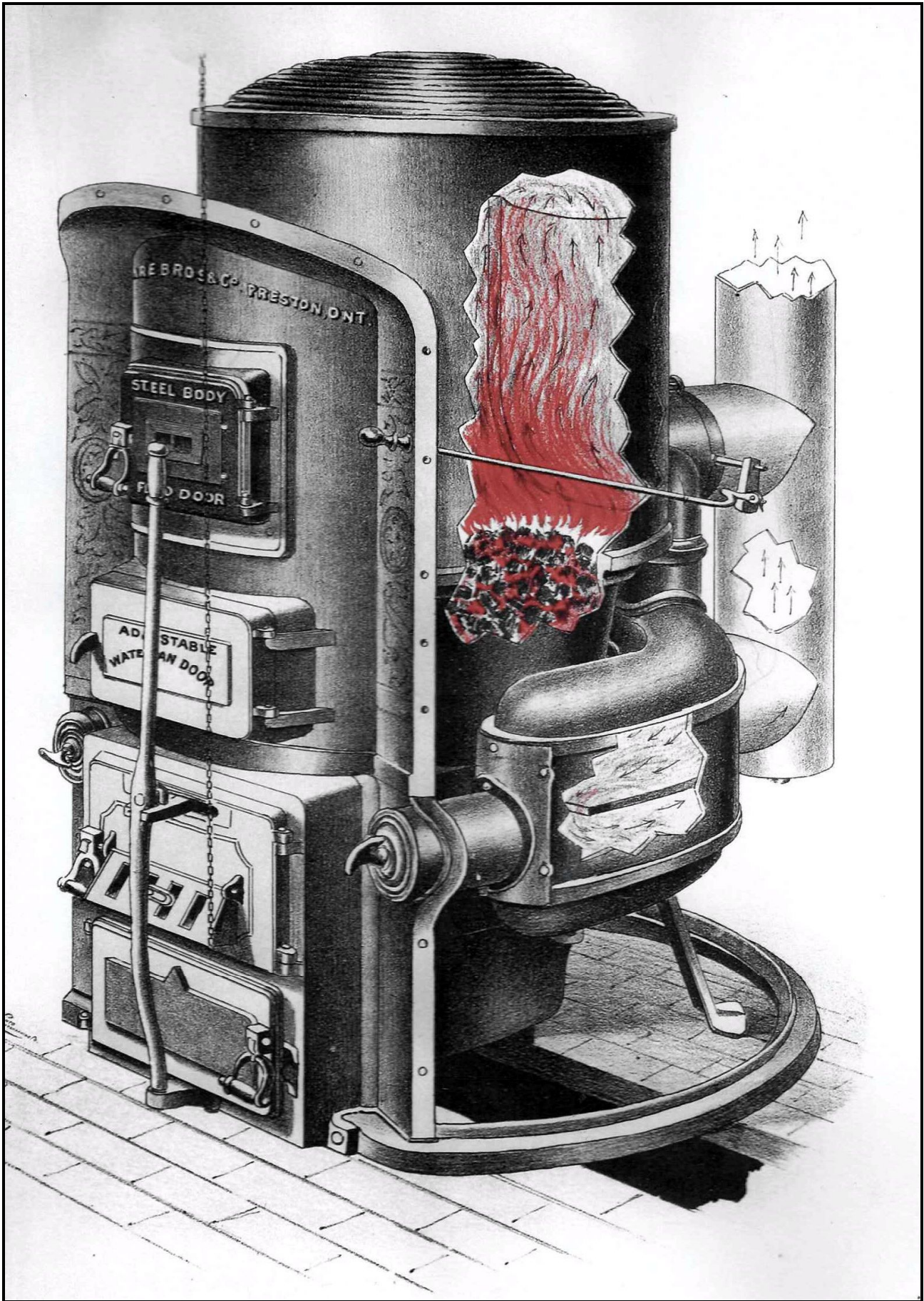
We need your co-operation Write us today.

Our Furnace Book



CLARE
BROS & CO.

PRESTON, ONT.



—1892—

—1893—

ILLUSTRATED AND DESCRIPTIVE

Catalogue and Price List

... OF THE IMPROVED ...

Howe Ventilating Stoves.

ORIGINAL AND ONLY GENUINE VENTILATING STOVES

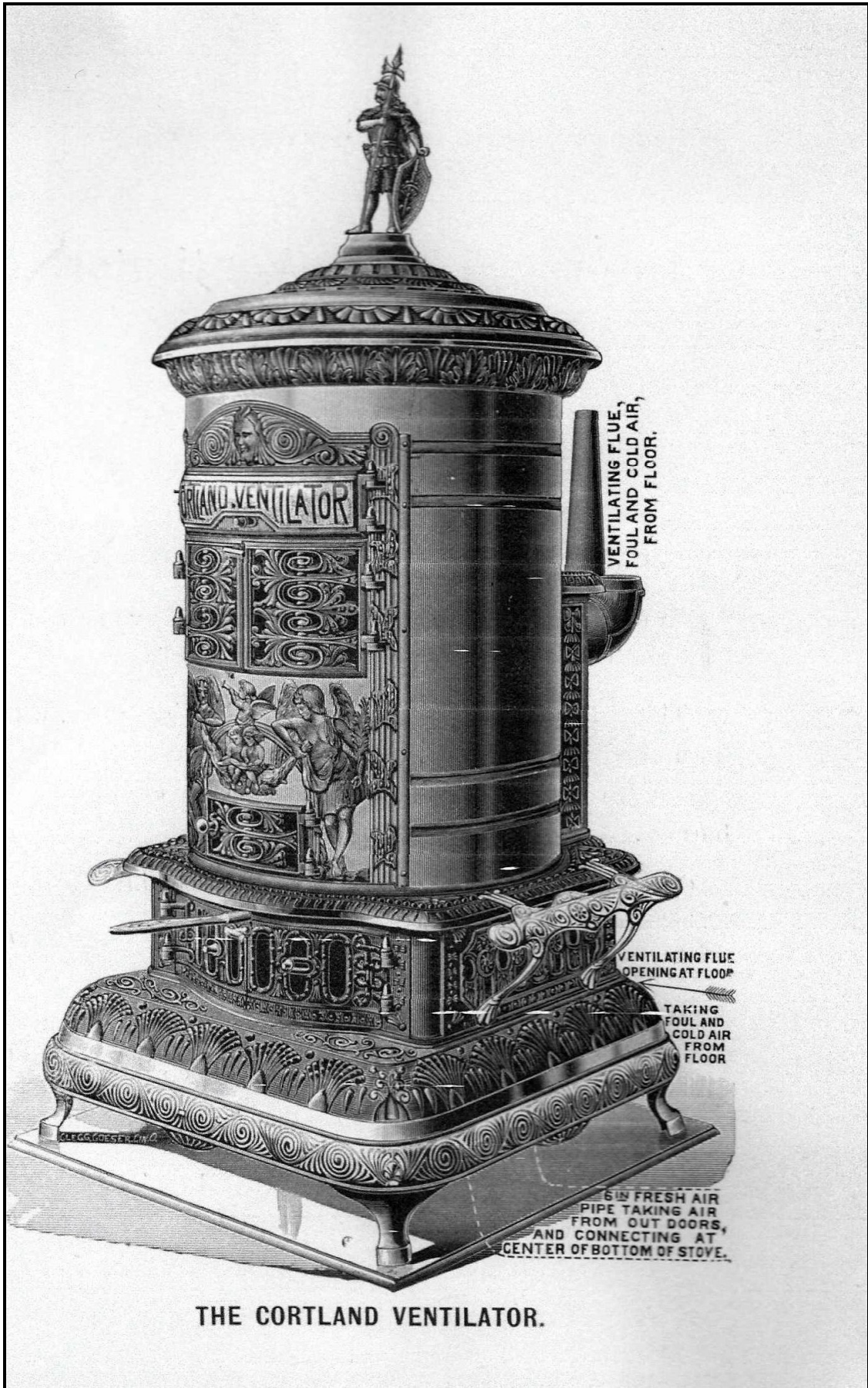
MANUFACTURED BY

The Cortland Howe Ventilating Stove Co.,

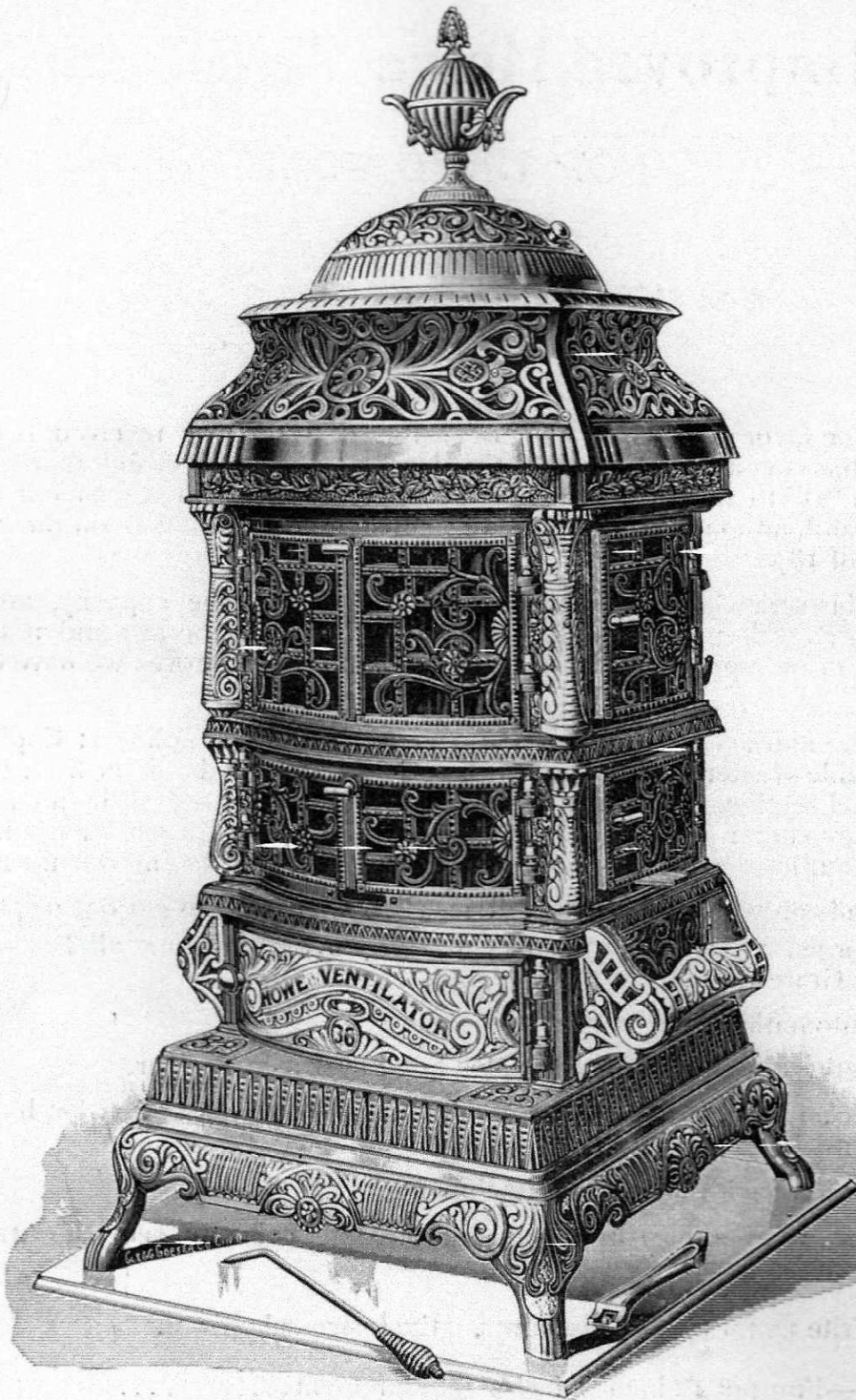
CORTLAND, N. Y., U. S. A.

OFFICE AND WORKS, ELM AND FRANKLIN STREETS.

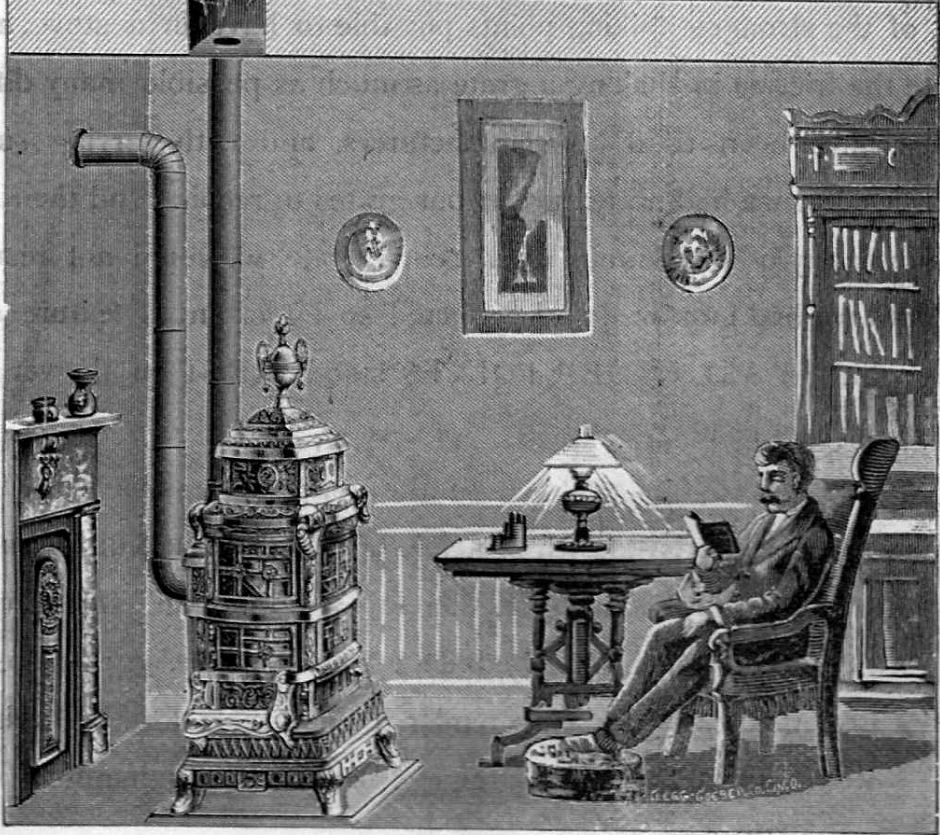
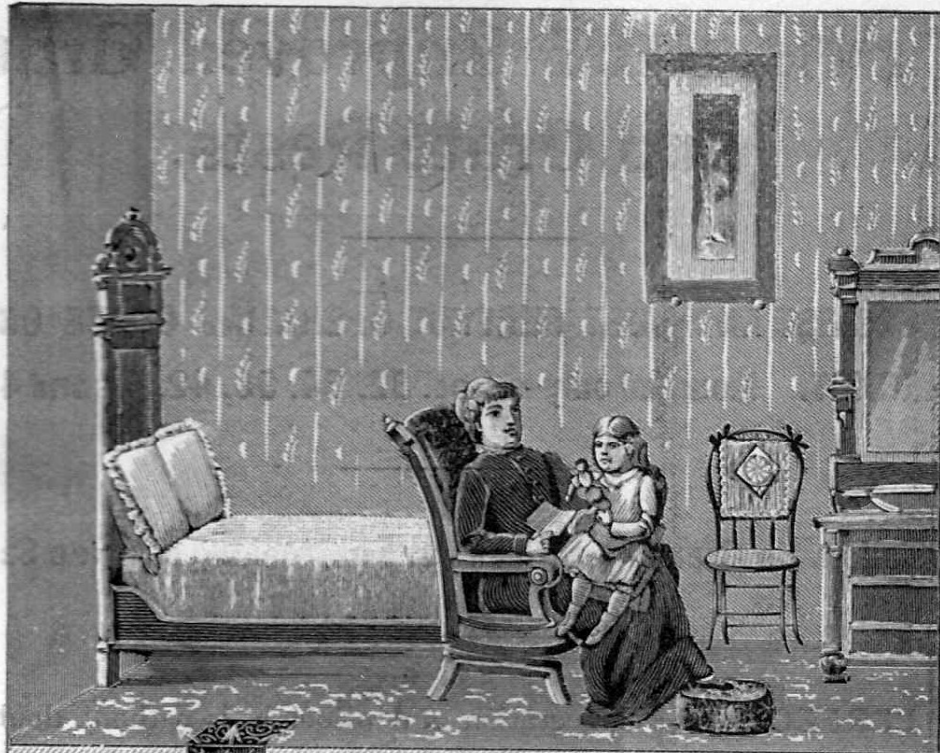
[SEE NEXT PAGE FOR LIST OF AGENTS.]



THE CORTLAND VENTILATOR.



THE IMPROVED HOWE VENTILATOR.
A SERIES.



STOVES

FOR 1904



SEARS, ROEBUCK & CO.



CHICAGO

U · S · A



8Y 2nd Edition.

OUR NEW ACME BRILLIANT BASE BURNER

\$21.23 TO \$28.75

HARD COAL HEATER FOR 1903.

THE FINEST THE WORLD PRODUCES. A DREAM OF AN ARTIST IN DESIGN, TRIMMING, FINISHING, IN ITS CONSTRUCTION THROUGHOUT, THE HIGHEST OF HIGH GRADE BASE BURNERS, THE EQUAL OF ANY BASE BURNER HARD COAL HEATER MADE BY ANY MAKER, REGARDLESS OF PRICE.

THE ACME BRILLIANT BASE BURNER is built on new lines for 1903, newly perfected model, and it embodies all the very latest, handsoemest and best features of every other high grade base burning hard coal heater made, with the defects of none. The Acme Brilliant Base Burner excels all others in appearance, in amount of nickel work, in the economic consumption of fuel and the volume and distribution of heat.

NICKEL FINISH. We believe we put more nickel on the Acme Brilliant Base Burner than is used on any base burning heater made. The nickel finish includes a large, handsomely ornamented spun brass nickel urn—we believe the handsomest nickel plated urn that is used on any base burner made; heavy, nickel plated swing top of the very latest design, full nickel dome head of a new design, heavily nickeled corner wings, heavily nickeled hearth plate, heavily nickeled ash door panel, heavily nickeled foot rails, heavily nickeled name plate and the stove stands on a full heavy nickel plated frame with nickel plated legs. The nickel plating is done by the very best process (the XXX triple plated brand), highly polished, giving the stove an appearance that must be seen to be appreciated.

IT IS MADE WITH A DOUBLE HEATING FLUE,

to which a pipe can be attached for heating an upper room or increasing the heat in the lower room; it is made with the very latest Johnson self feeding magazine, handsomely finished swing mica doors on three sides; heavy, large non-destructible firepot; latest Akron Duplex grate, with shaking ring; large ash pan. Osgood's patent full base heating flues, tea kettle attachment and cast elbow at back.

HOW WE MAKE THE PRICE \$21.23 Our special inside, heretofore unheard of prices of \$21.23, \$25.13 and \$28.75, according to size, is made possible by reason of our having contracted with the manufacturer for his entire output of Acme Brilliant Base Burners, for shipment direct from our foundry in Pennsylvania, where the anthracite coal fields are located and where the most perfect operating hard coal base burners are produced. The contract price is based on the actual cost of material and labor, with pig iron bought at the lowest market quotations, and to the actual cost of material and labor is added our one small percentage of profit, making a price from 15 to 25 per cent lower than inferior base burners of the same size are sold to dealers in carload lots at wholesale.

SEE PAGE 2 FOR OUR LIBERAL \$1.00 TO \$5.00 C. O. D., SUBJECT TO EXAMINATION OFFER.

OUR BINDING GUARANTEE.

Every Acme Brilliant Base Burner is covered by a binding guarantee, as to quality of material, workmanship, finish and burning qualities of the stove, and if it fails to perform its duty, or if it gives out by reason of defect in material or workmanship, we will replace or repair it FREE OF CHARGE.

WE FURNISH THIS STOVE in the following sizes at the following special prices, delivered on the cars at our foundry in Pennsylvania.

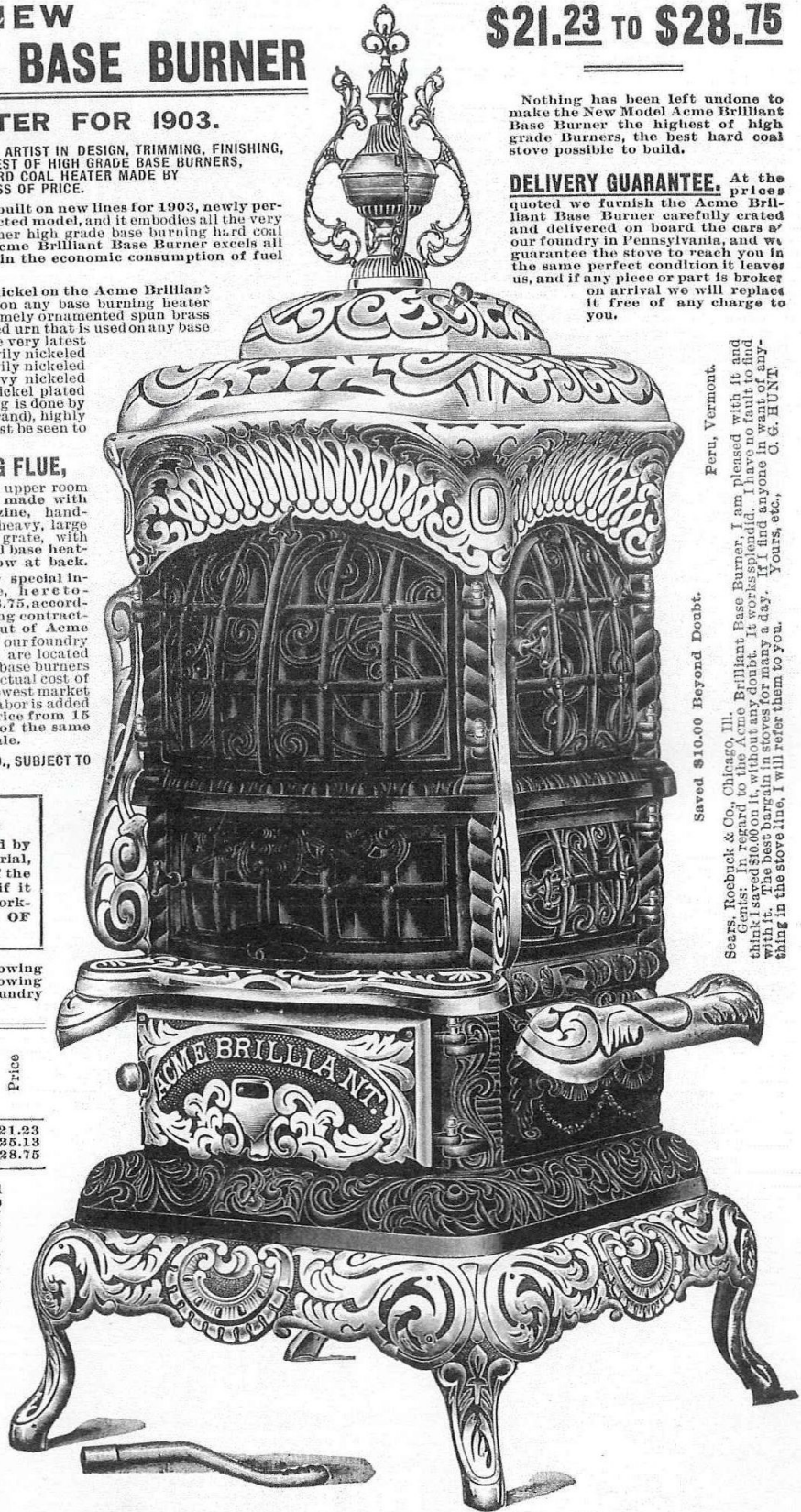
Catalogue Number	Stove Number	Firepot	Floor to Urn Base, Inches	Floor Space, Inches	Size, Floor Collar	Weight, Pounds	Price
22P290	22	12	48½	21¾x21	6 in.	284	\$21.23
22P291	24	14	50½	24 x24	6 in.	320	25.13
22P292	26	16	53½	26¾x26¾	6 in.	375	28.75

WHERE WE QUOTE PRICES delivered on the cars at foundry it is done to save the expense of freight, cartage, and handling into and out of our store in Chicago, and all the saving goes to the customer in the low prices we make. It enables us to quote you a price direct from the foundry that barely covers the cost of material and manufacturing with but our one small percentage of profit added. A price only made possible by eliminating all the handling expenses.

ABOUT THE FREIGHT. THE ACME BRILLIANT BASE BURNER weighs from 284 to 375 pounds, according to size as listed. It takes a low freight rate (third class), and the freight will average for 100 pounds for 500 miles about 80 cents, greater or lesser distances in proportion, so you will find the freight will amount to next to nothing as compared with what you will save in price.

ENTIRELY NEW DESIGN FOR 1903.

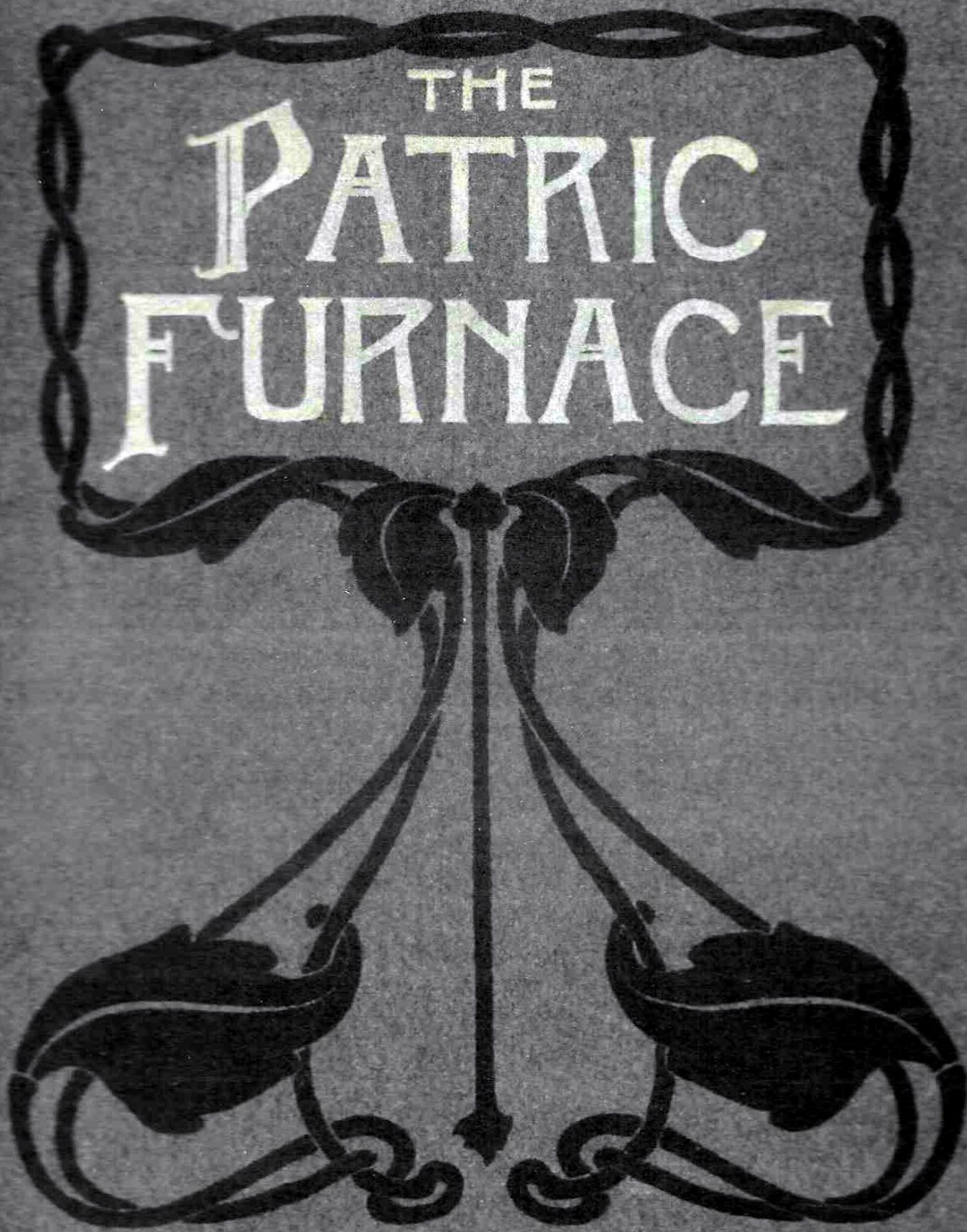
We can always furnish repairs.



Nothing has been left undone to make the New Model Acme Brilliant Base Burner the highest of high grade burners, the best hard coal stove possible to build.

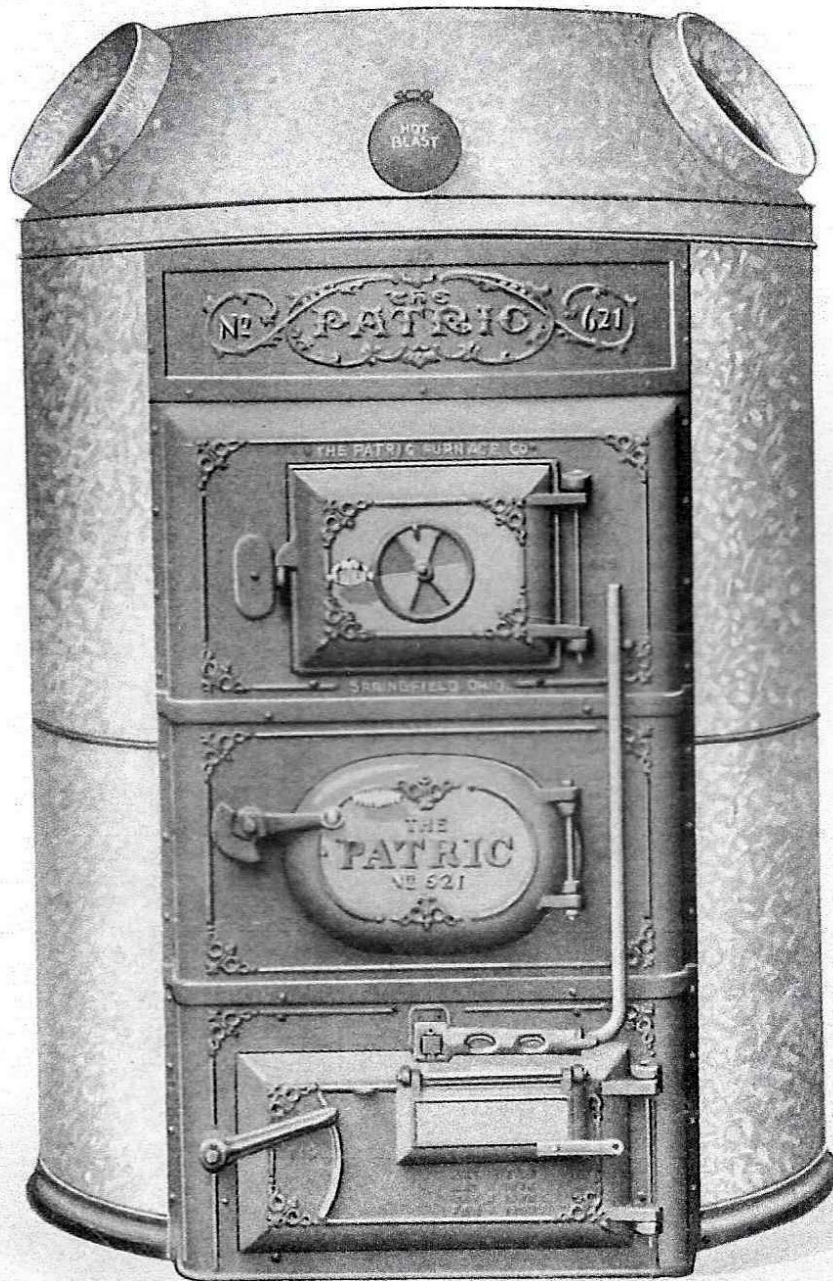
DELIVERY GUARANTEE. At the prices quoted we furnish the Acme Brilliant Base Burner carefully crated and delivered on board the cars at our foundry in Pennsylvania, and we guarantee the stove to reach you in the same perfect condition it leaves us, and if any piece or part is broken on arrival we will replace it free of any charge to you.

Perru, Vermont.
Sears, Roebuck & Co., Chicago, Ill.
Gents: In regard to the Acme Brilliant Base Burner, I am pleased with it and think I saved \$10.00 on it, without any doubt. It works splendidly. I have never had anything in the stove line, I will refer them to you. Yours, etc.,
C. G. HUNT.
Saved \$10.00 Beyond Doubt.

A decorative floral border in a dark color, featuring a central stem with two large, symmetrical, bell-shaped flowers at the bottom. The top of the border is a horizontal band with a repeating leaf-like pattern.

THE
PATRIC
FURNACE

MADE IN SPRINGFIELD OHIO



**Nos. 615, 618, 621, 624 and 627—Improved "Patric" Furnace
Front View with Galvanized Case.**

WISE *Warm Air Furnaces*

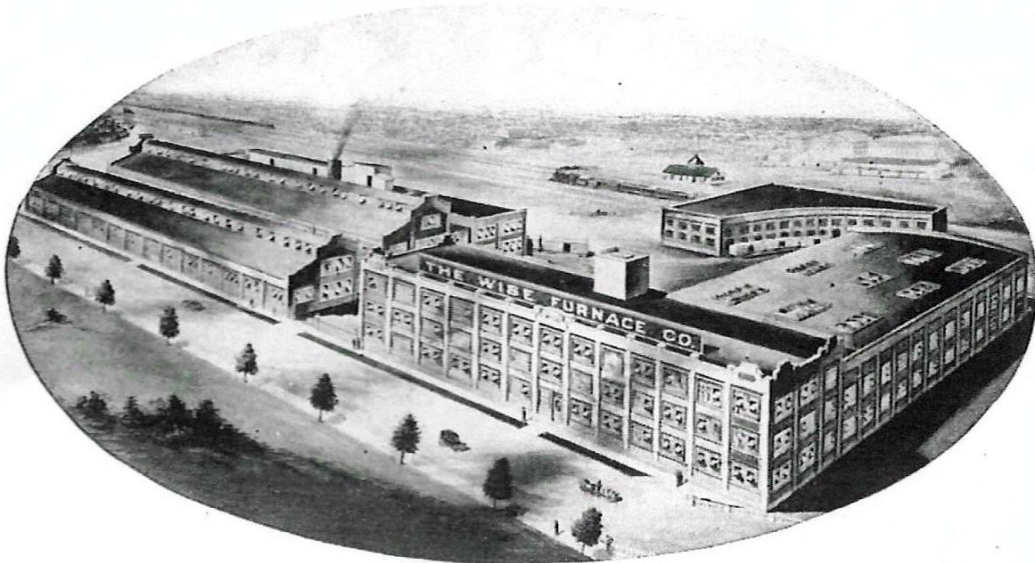
200 SERIES
PATENTED

THE WISE
FURNACE
CO.

.....
AKRON, OHIO

CATALOG No. 19

THE "WISE"
WARM AIR FURNACE
200 SERIES



HOME OF THE WISE FURNACE



TRADE MARK

Our Guarantee

HIGHEST QUALITY, BEST WORKMANSHIP
ABSOLUTE SATISFACTION TO OUR CUSTOMERS

THE WISE FURNACE COMPANY

Manufacturers of Warm Air Heaters

AKRON, OHIO, U. S. A.



The Wise Furnace Co. Akron, Ohio.



Wise 200 Series



SECTIONAL VIEW, SHOWING FURNACE, CASING, AND SMOKE-PIPE, COMPLETE

For Complete Specifications, see Page 16



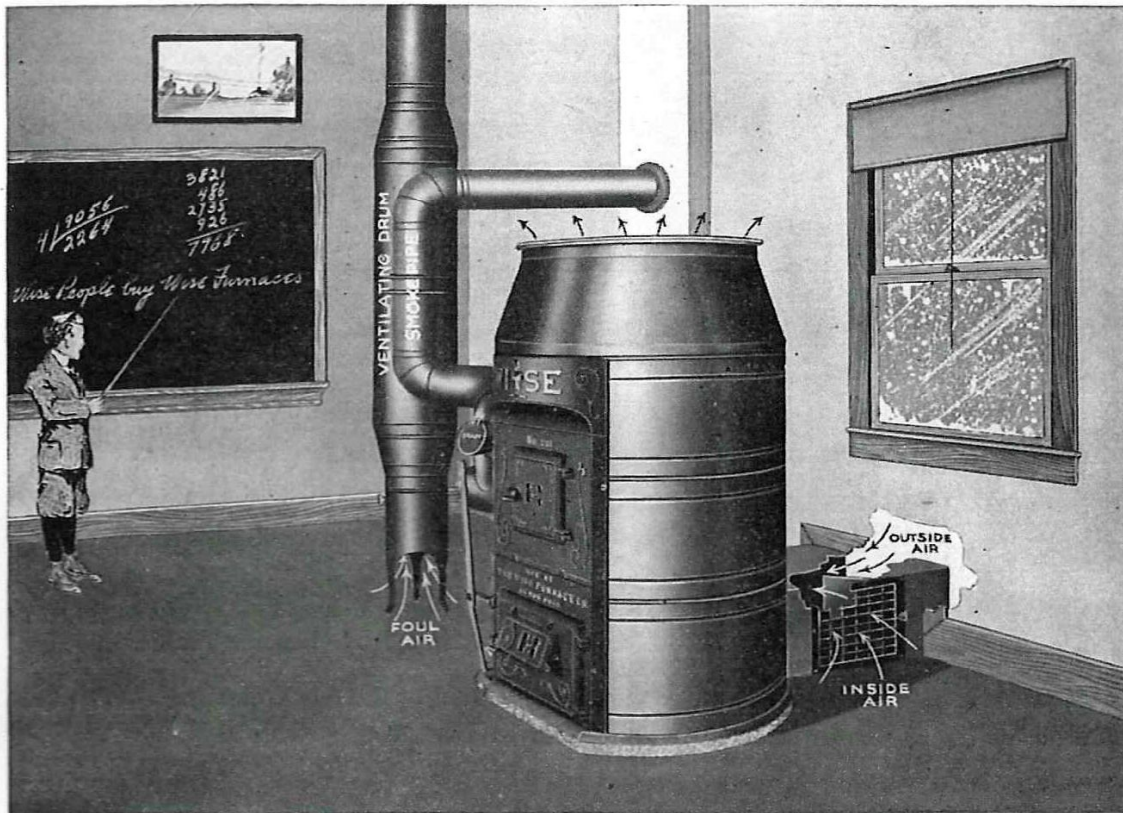
Wise People Buy Wise Furnaces



The Wise Furnace Co. Akron, Ohio.



Schoolroom Heaters



The Wise System of Heating and Ventilating Schoolrooms, Churches, Etc.

The above illustration shows an ideal system of heating and ventilating rooms where there is no basement and where no ventilating stacks are provided in the building. A study of this illustration will give a clear idea of the ventilating drum, which carries off the foul air and also the manner of admitting both inside and outside air to supply the furnace. This fresh air intake is provided with an adjustable register on either side to admit air from the inside of the building and is also connected with the outside to admit outside air. The adjusting of the inside intakes will regulate and apportion the amount of inside and outside air passing into the furnace.

Many states have laws governing the heating and ventilating of schoolrooms, etc., and the above system will comply with all of these regulations. Any of the Wise Furnaces are adaptable to this ventilating system.



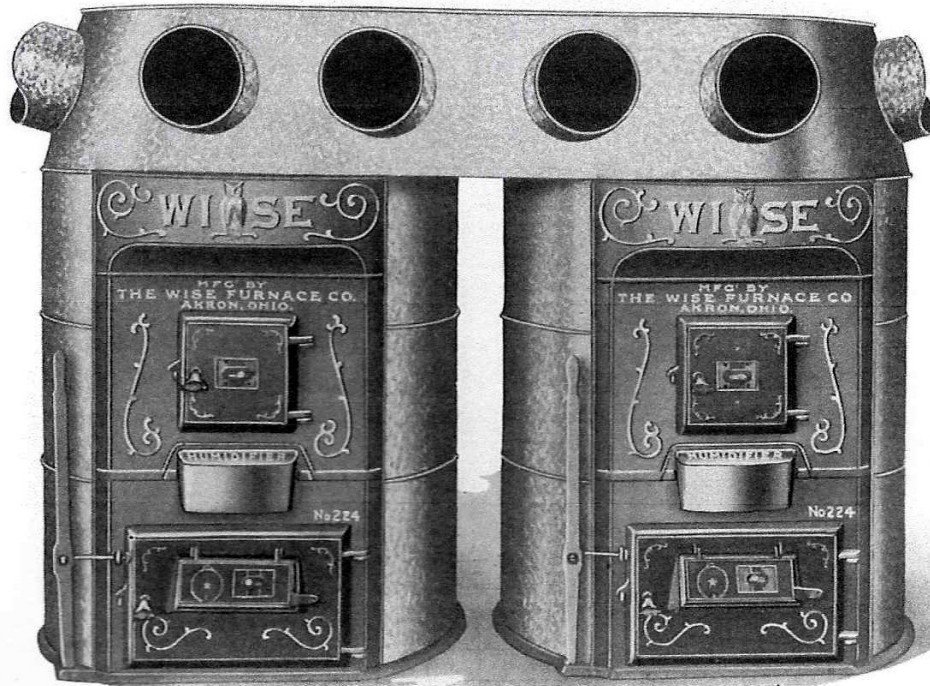
WISE WARM AIR FURNACES



TRADE-MARK

THE WISE FURNACE CO.
AKRON, OHIO. U.S.A.

THE WISE FURNACE COMPANY, AKRON, OHIO



Wise Furnaces Set in Battery Form

The battery system is the setting of two furnaces side by side with casings connected as shown in the above illustration. This method has proved very desirable especially in the heating of large buildings, churches, schools, etc., where a single heater is not sufficient for the requirements in extreme weather.

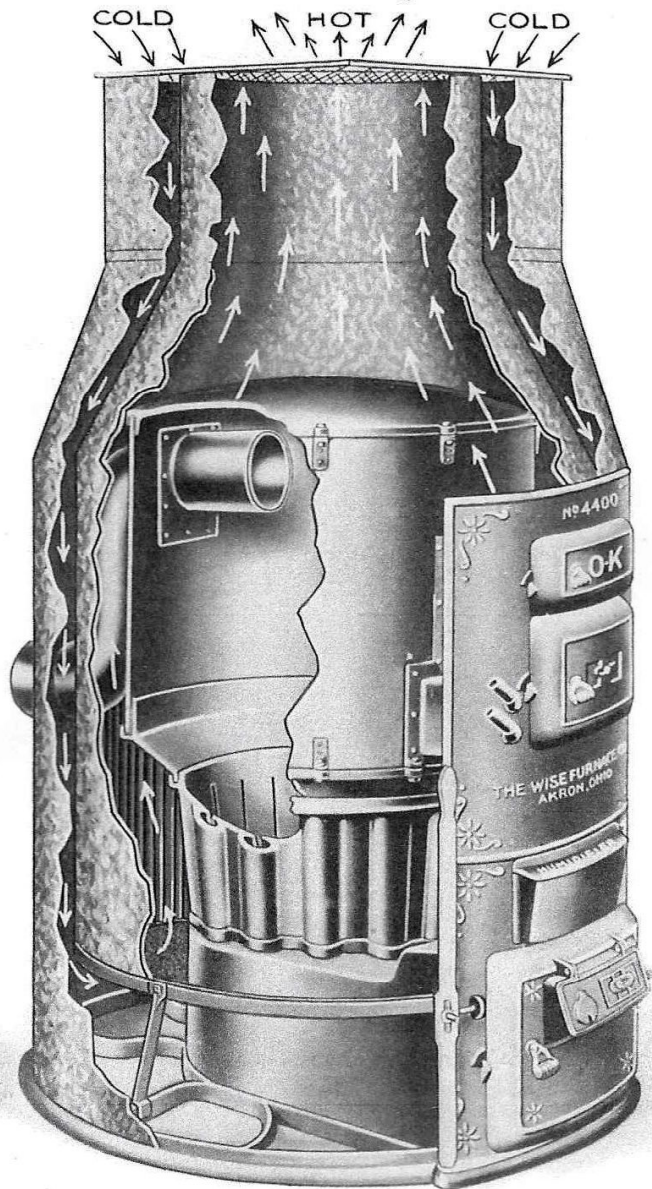
They can be used independently or together as desired and according to the weather conditions.

Any WISE Furnaces shown in this catalogue can be erected in battery form. Prices on special battery casings will be given on request.

WISE PEOPLE BUY WISE FURNACES

THE WISE FURNACE COMPANY, AKRON, OHIO

O. K. 4000 Series Pipeless Furnace



SHOWING CIRCULATION OF THE COLD AND WARM AIR INSIDE THE TRIPLE CASING

MEASUREMENTS AND CAPACITIES

No. and Size	Diameter of Firepot	Diameter of Casing	Size of Flue	Size of Register	Weight	Estimated Capacities
4000	20	40	S	30x30	800	8000 to 15000
4400	23	44	S	32x32	1000	15000 to 20000
4800	26	48	S	34x34	1300	20000 to 40000

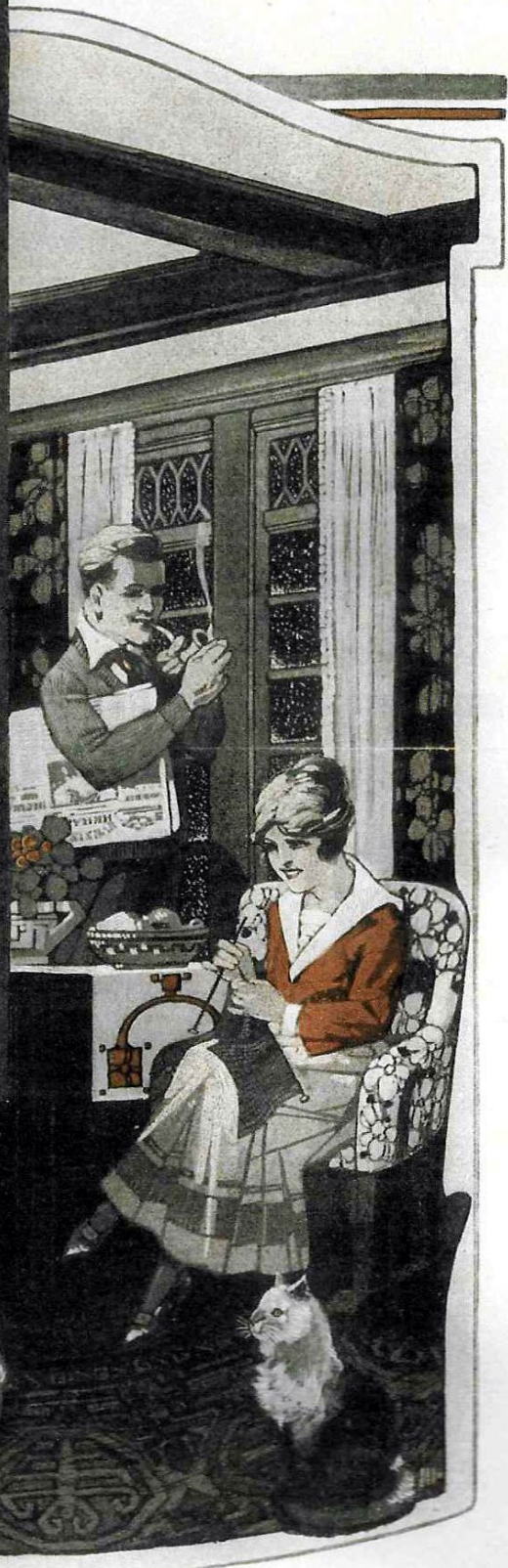
WISE PEOPLE BUY WISE FURNACES

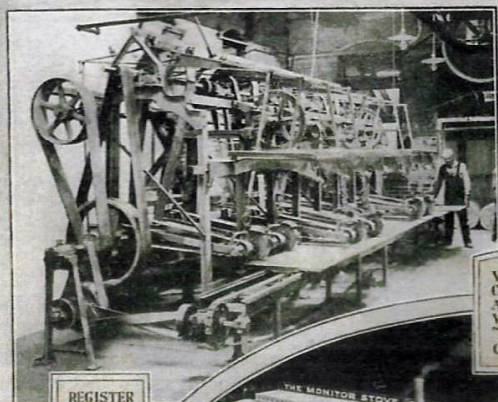
The
PIPELESS
CALORIC
FURNACE

THE ORIGINAL PATENTED PIPELESS FURNACE



"Furnace Heat For Every Home"



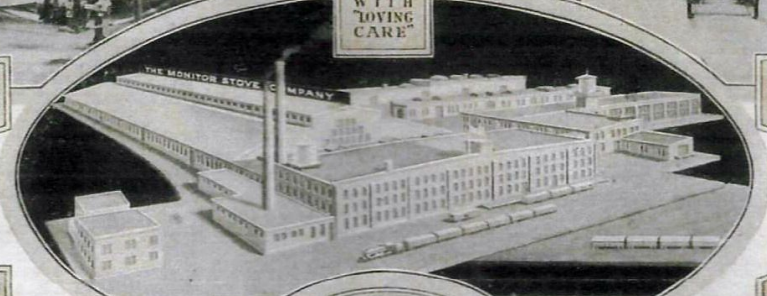


REGISTER POLISHING MACHINE



GRINDING MONITOR CASTINGS

WHERE CALORICS ARE MADE WITH "LOVING CARE"



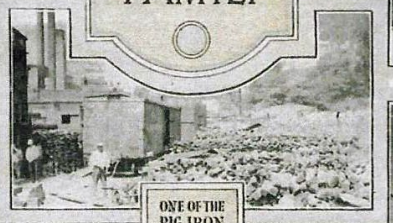
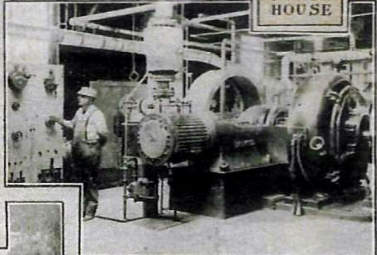
CORNER OF OUR BUSY SALES OFFICE



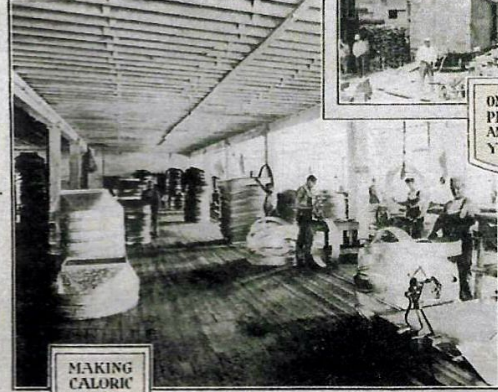
WHERE WE LIVE OUR JOBS

SCENES at the HOME of the MONITOR FAMILY

MONITOR POWER HOUSE



ONE OF THE PIG IRON AND COKE YARDS



MAKING CALORIC CASINGS



SECTION OF THE MONITOR FOUNDRY

The MONITOR STOVE COMPANY
CINCINNATI - OHIO